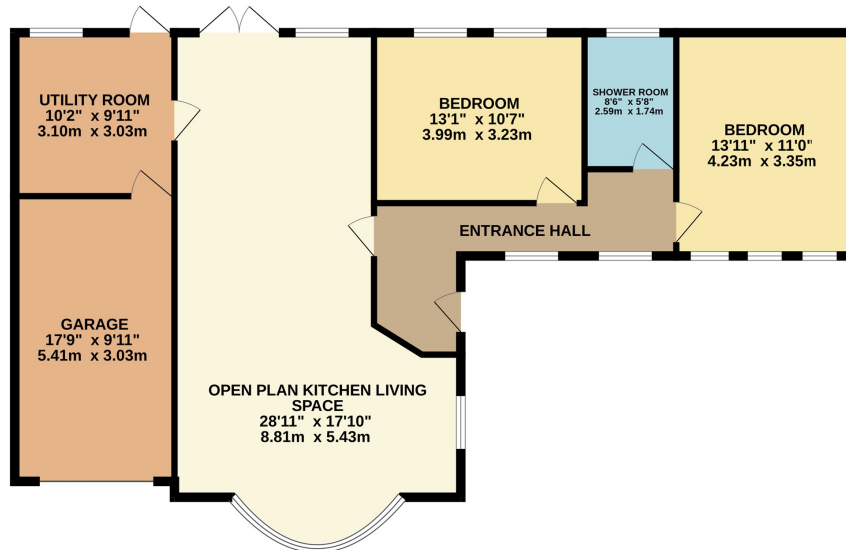


Greenside The Green, Southam

£525,000

charlesrose.

GROUND FLOOR
1153 sq.ft. (107.1 sq.m.) approx.



Beautifully presented detached bungalow overlooking The Green in the heart of Long Itchington, offering stylish open-plan living, landscaped gardens, generous entertaining space and a superb village setting. Featuring a bright shaker-style kitchen, oak flooring throughout much of the accommodation, extensive terrace, mature gardens and a peaceful, highly regarded position within the village.

charlesrose.

- 01926 832411
- hello@charlesrose.co.uk
- charlesrose.co.uk

